



Photo: Judy Miller



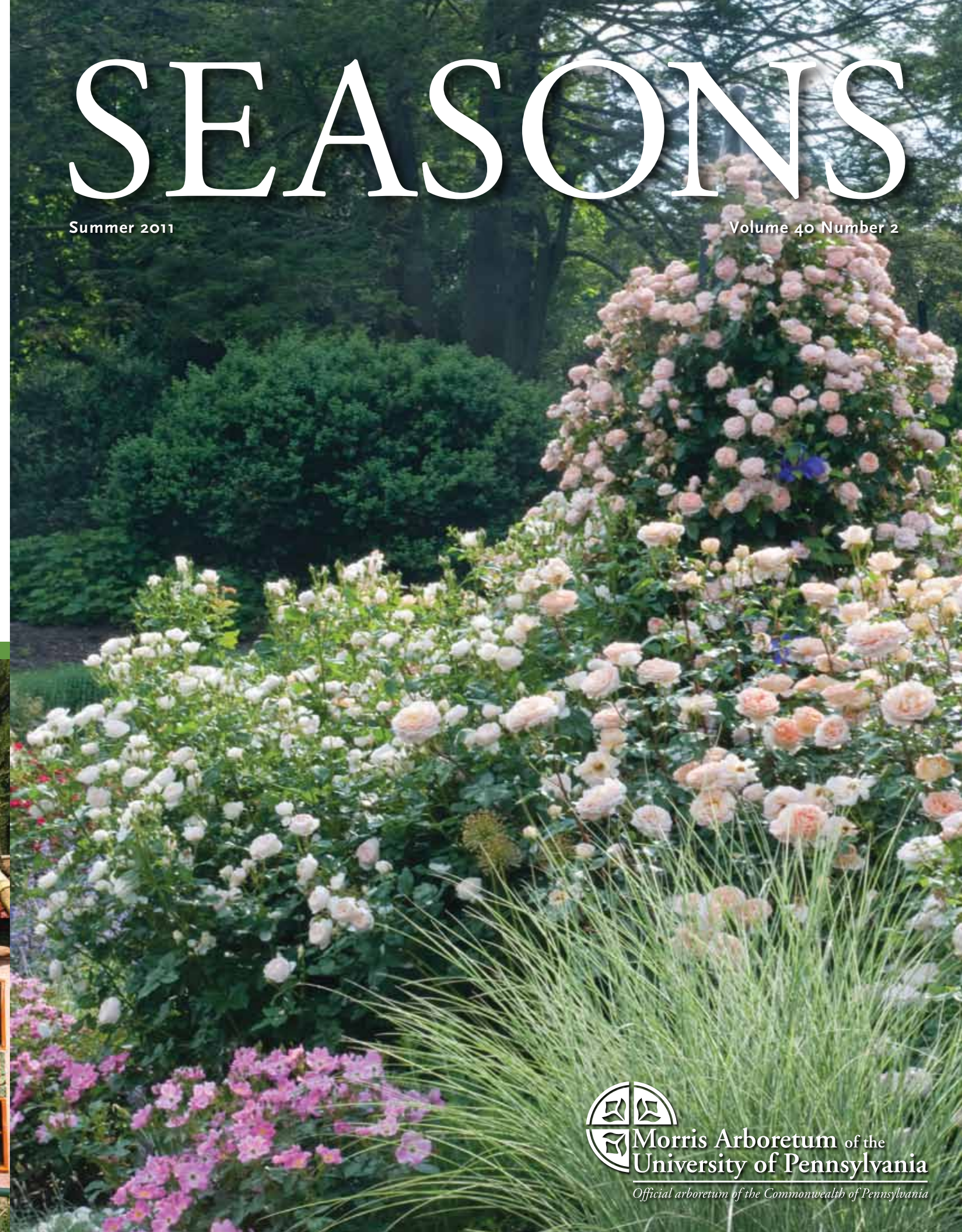
Mixed Sources
Product group: Well-managed
forests and other controlled sources
Cert. no. FM-COC-1530
www.fsc.org
© 1996 Forest Stewardship Council

Seasons newsletter is printed on FSC (Forest Stewardship Council) certified paper, which supports the growth of responsible forest management worldwide through its international standards.

SEASONS

Summer 2011

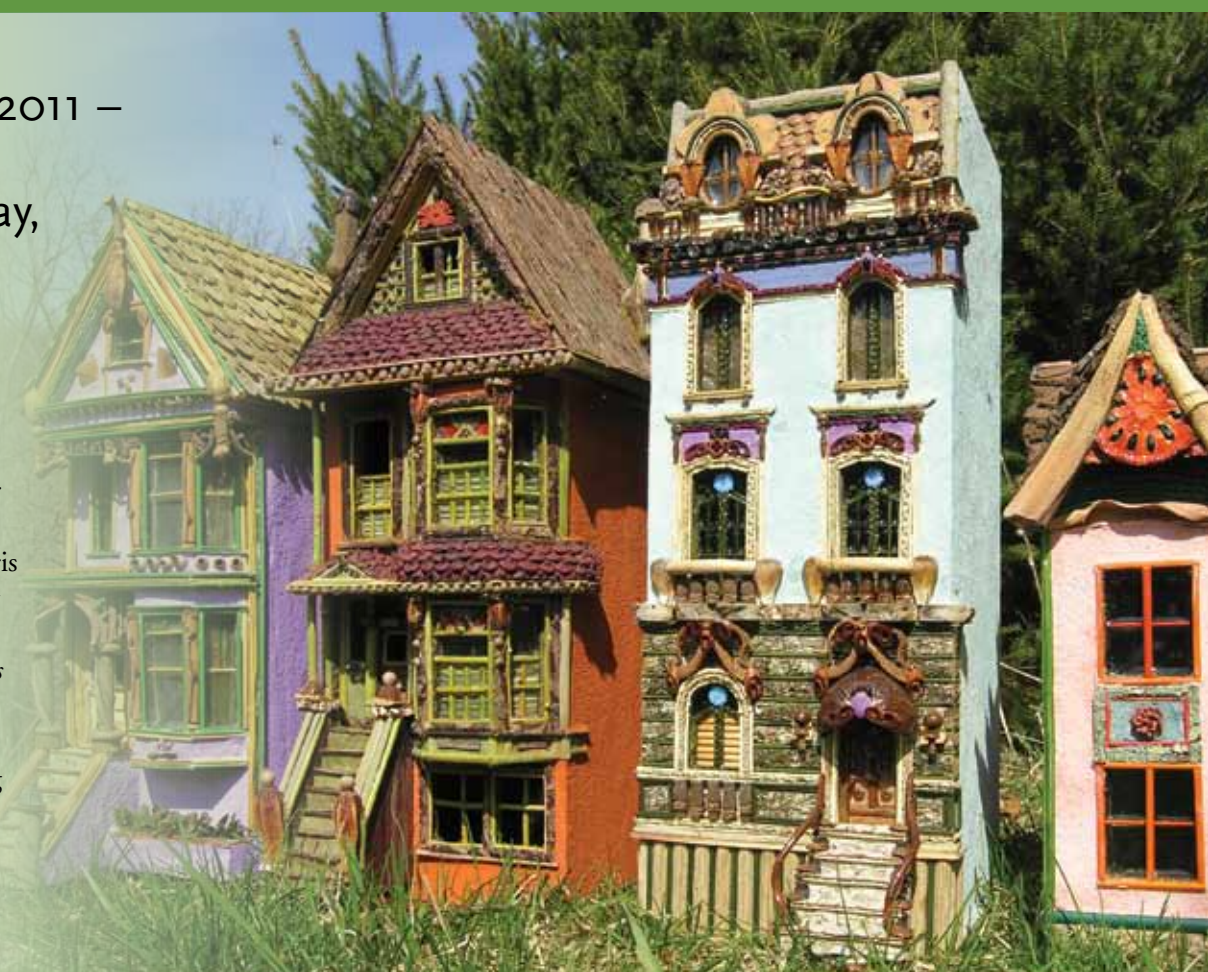
Volume 40 Number 2



Garden Railway 2011 – *Painted Ladies* – Opening Saturday, May 28th

“Nobody seems to think of building a sober house!” a *New York Times* writer said of San Francisco in 1883. This summer, discover replicas of these glorious Victorian homes at the Morris Arboretum’s Garden Railway Display. Clothed in happy, vibrant colors, *Painted Ladies* will transport you to San Francisco or Cape May – all within the magical setting of a miniature garden made entirely of natural materials.

Photo: Paul Busse



A Note from the Director

PAUL W. MEYER, *The F. Otto Haas Director*

Sacred Spaces at the Morris Arboretum

As an undergraduate at Smith College, Morris Arboretum intern Shea Zwerver, was inspired by a visiting professor, Randolph Hester, and his research on people's perceptions of "sacred spaces." Sacred spaces may be different things to different people, but generally are places that are special or have significant personal meaning in a community or in our case, a garden. They may be considered especially beautiful, enlivening, or simply a quiet oasis. Perhaps, it may be the site of an important life event or a special childhood memory, or the place where one shared a last visit with a loved one.

Each of our nine interns is required to complete a special project during their tenure that advances the goals of the Morris Arboretum. For Shea's work, she surveyed staff, volunteers and visitors about their personal sacred spaces at the Arboretum. She found that after a little explanation of "sacred places," those responding had strong ideas and attitudes about their sacred spaces. These views can help guide us as we allocate resources and steward the Arboretum's rich and varied landscapes.

Many of the responses were as we might predict. The Arboretum's central feature, the rose garden was one favorite. A totally different and less prominent landscape, the wetland, was another. But many of those responding cited more obscure, small, quiet corners of the Arboretum as "their secret" sacred place. These included places well off the paved paths like the Japanese Hill and Water Garden, Lydia's seat, tucked away overlooking the Rose Garden, and the rock outcrop which presides over the Wissahickon. Unusual responses included the fish pond behind Gates Hall, the rock ruins behind the Katsura tree, the Baxter Memorial, the weeping hemlock in the far corner of the parking lot, the now deceased swamp white oak, and the squirrel scramble on *Out on a Limb*. Shea reports, "These responses were so interesting because people were very specific, they would say things such as: 'Sitting under the Katsura tree, or sitting on the stone bridge down in the sculpture garden.'" A few even expressed a reluctance to share their sacred place, because it is indeed so sacred to them that they want to keep it for themselves! You can read a sampling of visitor's reflections on their sacred spaces on page 3.

Whatever the place, I have been struck by the intensity of the feelings evoked as people discuss their sacred space. It is clear that these spaces are a source of serenity, comfort or spiritual retreat for many. And it is a big part of why they love the Arboretum. For those of us who work at the Arboretum, both staff and volunteers, it is a validation of the importance of our work and mission.

Though Shea's intern project is complete, I would like to encourage the continuation of this dialogue on sacred spaces. I invite you to visit <http://morrisarboretum.blogspot.com/2011/05/sacred-spaces.html> and share the story of your sacred place at the Arboretum and why it is important to you, your family and friends. We will all enjoy and learn from your experiences.

I give a big thanks to Shea for launching this project. It is one of many examples of how each year, each new class of interns brings a fresh crop of ideas to the Arboretum.

Paul



Photo: Nick Kelsh

SEASONS

Morris Arboretum of the University of Pennsylvania

Published quarterly as a benefit of membership. Inquiries concerning back issues, missing issues, or subscriptions should be addressed to the editor.

Available on microfilm.
USPS: 349-830. ISSN: 0893-0546
POSTMASTER: Send form 3759 to Newsletter,
100 East Northwestern Avenue, Philadelphia, PA 19118.

Christine Pape, Editor

The Morris Arboretum of the University of Pennsylvania is an educational institution that promotes an understanding of the important relationships between plants and people. The Arboretum conducts three major activities – horticultural display, public and professional education, and botanical and horticultural research.

Public Garden Hours:

Mon-Fri, 10-4
Sat/Sun, 10-5 (April - Oct.)
Sat/Sun, 10-4 (Nov. - March)
Thurs. 10-8:30 (June, July, August)

Information:

(215) 247-5777
www.morrisarboretum.org
<http://www.upenn.edu/paflora>

Guided Tours:

Every Sat/Sun, 2 p.m.

Visitor Entrance:

100 East Northwestern Avenue between
Germantown and Stenton Avenues in the
Chestnut Hill section of Philadelphia

These articles may not be reproduced in any form without the permission of the editor.

©2011 Copyright by the Trustees of the University of Pennsylvania. 5500 / 5:11 / PM

Arboretum Rentals

Hold your special event in one of Philadelphia's most beautiful settings. The Widener Center and surrounding grounds are available for weddings, parties, and private and corporate meetings up to 170 guests. For details contact Adele Waerig, Visitor Services Coordinator, at (215) 247-5777, ext. 158.

e-newsletter

Would you like to receive our monthly e-newsletter and other Arboretum updates via email? It's a great way for you to stay up-to-date on upcoming events, register online and help us save trees! Email members@morrisarboretum.org to be added. To address the problems of SPAM, many Internet Service Providers (ISPs) and email systems now block or filter email that is not from a "safe sender." Please add info@morrisarboretum.org and members@morrisarboretum.org to your list of accepted senders or friends list if you wish to receive this information.

Cover Photo – Paul Meyer

Contents

- I A Note from the Director
- 3 Words on Sacred Spaces
- 4 New Horticulture Center Awarded Platinum Level LEED® Certification
- 5 A Summer Saunter
- 6 *Go Out on a Limb* for Your Next Special Event
- 7 Annual Fund Update
- 9 New Penn Tree Program
- 10 Lydia Morris Legacy Society
- 10 Another Way to Support *Always Growing*
- 11 Spider Mites
- 12 Membership News
- 13 Costa Rica and New Zealand Trips
- 14 A "Green" Green Lawn
- 15 Classes, Lectures and Seminars
- 15 Summer Concert Series
- 16 Summer Events

Photo: Keith Snyder





"I enjoy the free-standing green house Fernery – the clean smell, green colors, life everywhere. It is so peaceful."

"The witchhazels remind me that life goes on even in the snow and ice."



"The step fountain is my sacred space because it feels small and secret and still has water."



"The log cabin is special to me. I tell my grandchildren it is Cinderella's house and ask them to run up and see if she is home. She must be very busy since we have not found her at home."

"I used to come to the Rose Garden to recuperate in the late 1950s. The center fountain was dry, and I could sit there, sheltered from the wind in winter cold. Virtually no one came to the Arboretum in those days, so I had the entire place to myself. I was recuperating from Post Traumatic Stress and I desperately needed solitude."



"The open spaces and long uninterrupted views are just as important as any "place" to provide rest and repose, and relief from visual stimulation."

"The strong history of the metasequoias is fascinating. To stand in the grove in mid-summer is spectacular."



New Horticulture Center Awarded Platinum Level LEED® Certification

The Morris Arboretum's new Horticulture Center has been awarded Platinum Level LEED® Certification, the highest rating of the US Green Building Council (USGBC). LEED® (Leadership in Energy and Environmental Design) is the nation's preeminent program for the design, construction and operation of high performance green buildings. It is the first LEED® Platinum certified building for the University of Pennsylvania, and only the second in the state of Pennsylvania.

This highest level distinction from the US Green Building Council signifies a great achievement for the Morris Arboretum. The complex utilizes modern sustainable energy and water management technologies, reflecting the stewardship and teaching intentions of Morris Arboretum's founders, John and Lydia Morris. The Horticulture Center is an exhibit of the best sustainable practices of our time.

"I have been anticipating this day for nearly 30 years. We are very grateful to all the many contributors to the *Always Growing* Campaign that made this project possible, led by Dodo Hamilton, The Haas Family, Ed Rendell, former Governor of The Commonwealth of Pennsylvania, and the William Penn Foundation. A project like this happens only with the dedicated commitment of a huge team of individuals, planning and implementing the work. It is our hope that this exhibit of sustainability will be of special interest to all of our visitors, but especially to architects and planning design professionals," said Paul Meyer, *The F. Otto Haas Director* of Morris Arboretum.

The newly-created Horticulture Center provides flexible work space for the Arboretum's horticulture, education, maintenance, and facilities staff, providing important infrastructure for staff and equipment. The 20,840-square-foot facility provides space for staff to manage their extensive responsibilities for the Morris Arboretum's 167-acre property in the most efficient and cost-effective manner possible. The complex features:

- 24 office spaces
- Two conference rooms
- Kitchen
- Break room
- Men's and women's locker rooms
- Carpentry Shop
- Storage for Arboretum vehicles including trucks, garden carts, lawn mowers and other large equipment

The Horticulture Center was designed by architects from Overland Partners of San Antonio, TX, Muscoe Martin of Philadelphia's M2 Architecture, and Andropogon Associates, Morris Arboretum's Philadelphia-based landscape planners for the Arboretum since 1977. The contractor for the project was W.S. Cumby. The mechanical, electrical and plumbing engineer was Bruce Brooks & Associates, and the site/civil engineers were Hunt Engineering.

A Summer Saunter

ANTHONY AIELLO, *The Gayle E. Maloney Director of Horticulture and Curator*

Now that summer is here, we tend to think of annuals and perennials as the main seasonal interest in the garden. But a stroll through the Arboretum will lead you to a number of trees and shrubs that bloom from June through August and even into September, providing plenty of garden interest during the heat of the year.

Starting in the parking lot, you will come across two varieties of Amur maackia (*Maackia amurensis*), SUMMER



TIME and 'Starburst'. Amur maackia (left) is a tough Asian tree valued for its cold hardiness and tolerance of urban conditions. It has quietly interesting copper-colored bark and small creamy white flowers in mid-summer.

Outside the Widener Education Center is one of the old standards of the summer garden,

Hibiscus syriacus. Look for 'Diana' with its bright white flowers (below left) and 'Minerva' with its lavender flowers and dark red centers. These National Arboretum selections were bred for an extended period of summer bloom;



they have the added advantage of being sterile so they do not seed around the garden.

As you pass through the shade of the Teahouse Woods, the large shrub near the Japanese bell is *Aesculus parviflora*. You will also find this plant thriving in full sun above the Rose Garden – a rare instance where a shrub can tolerate

both conditions equally. Native to the southeastern US, bottlebrush buckeye (right) needs plenty of space to grow, and is best admired at the Arboretum or used in large properties.

Another plant equally at home in sun and shade is *Hydrangea quercifolia* (oakleaf hydrangea). It is also growing in the Teahouse Woods and



by the steps above the Rose Garden. Likewise native to the southern US, oakleaf hydrangea (above) is an excellent garden plant, well suited to a variety of landscapes. There has been an explosion of varieties in recent years. Look for smaller forms such as 'Pee Wee' and 'Sikes Dwarf', a double-flowered form ('Snowflake'), an tall upright variety with large flowers heads (SNOW QUEEN), and if you like this sort of thing, one with yellow leaves (LITTLE HONEY).

At the entrance to the Long Fountain you will find *Hypericum* 'Hidcote'. The bright yellow flowers of this St.-John's-wort are two to three inches across, blooming in June and July, and are perfect for a bright location. These plants are great for attracting pollinators and given good drainage and full sun, are rewarding additions to the mixed border.

Flanking the entrance to the Garden Railway is bluebeard (*Caryopteris* × *clandonensis* 'First Choice' and 'Inoveris' (GRAND BLEU)), which blooms in late summer with a profusion of small blue flowers (for more information see *Seasons*, Summer 2010*). *Caryopteris* (right) is a perfect plant for hot dry locations, and its rich blue flowers are a welcome sight at the end of a long hot August.



Photos: Paul Meyer

Along the back side of the Garden Railway is a small collection of clethra, or summersweet, aptly named for their heady flowers that bloom in July and August. Among those planted in this area is *Clethra barbinervis* (Japanese clethra), a large shrub that has the added bonus of beautiful exfoliating bark and bright yellow-orange fall color.

One of the best summer plantings at the Arboretum is the Russian sage (*Perovskia atriplicifolia* 'Little Spire' – shown at left) at the Step Fountain. The large masses of



grey-blue flower spikes provide a great show all summer long. This is another plant that needs heat and dry conditions to flourish (also see *Seasons*, Summer 2010*).

Finally, tucked into a far corner of the English Park, near where the

East Brook joins the Wissahickon Creek, are a group of deciduous native azaleas collected by Dr. Henry Skinner in the early 1950s. Most of these flower in early May, but two of them make a great addition to any garden for their summer flowers. These are roselshell azalea

(*Rhododendron prunifolium*) with its orange-red flowers in July and August and sweet azalea (below right)

(*R. arborescens*) with its intensely fragrant and creamy-white flowers. Both of these are a little more exacting in their cultural requirements, needing a moist, well-drained acidic soil, with protection from strong winds or sun. But if you can provide those conditions, they will reward you amply.



So, if you need a break from the heat or summer, take a stroll through the Arboretum – you'll be surprised what you might find!

(*Available online at www.morrisarboretum.org)



Go Out on a Limb for Your Next Special Event!

Are you looking for an extraordinary, memorable setting for your next party?

Host a sit-down dinner party for 20 or a cocktail party for 75 at the Arboretum's award-winning *Out on a Limb* exhibit. *Out on a Limb* provides a dramatic, one-of-a-kind backdrop for a gathering like none other. Your guests will experience trees and each other in a whole new way – 50 feet up in the treetops.

Special rates are available for dates in July and August. Please note, rentals are available for evenings only. For pricing, availability or more information, email rentals@morrisarboretum.org or call (215) 247-5777, ext. 136. A party *Out on a Limb* is one you and your guests won't soon forget!

thank you!!



You did it! Last fall, the Arboretum announced the Lenfest Challenge to help support the Annual Fund. This challenge was a pledge from Marguerite and Gerry Lenfest to match up to \$50,000 given to the Arboretum's Annual Fund through new and increased gifts. This resulted in an overwhelming response and strong support of the Annual Fund. Through the generosity of our donors, the Arboretum not only reached the goal of \$50,000, but exceeded it, by raising a total of \$100,000 in new and increased gifts alone! We wish to extend a special thanks to Marguerite and Gerry Lenfest for their generosity and support of the mission and goals of Morris Arboretum!

We have reached monumental milestones in growing the program, but we are not there yet...

2010-2011 GOAL - \$425,000

\$305,000 has been raised as of March 1, 2011!



Your continued support of the Arboretum will help to preserve a place that means so much to us all! Every gift, of every size makes a difference. All gifts need to be received by June 30, 2011.

If you would like more information, please feel free to contact Shannon Makhija at (215) 247-5777, ext. 161 or smakhija@upenn.edu.

YOUR ANNUAL FUND QUESTIONS ANSWERED...

The Annual Fund is a yearly effort to raise unrestricted gifts specifically to help offset the Arboretum's annual operating expenses. It is the Annual Fund that supports the budget for salaries and benefits for our staff with the remainder used to support equipment, maintenance and other operating costs. By supporting the Annual Fund, donors make the continuing growth at the Arboretum possible. Below are some commonly asked questions about the Annual Fund. Please feel free to contact Shannon Makhija with any additional questions at (215) 247-5777, ext. 161 or smakhija@upenn.edu.

Why doesn't membership and admissions cover all the operating expenses?

Membership and admission dues only cover about 18% of our annual expenses. The Annual Fund represents 37% of the Arboretum's contributed income within the annual operating budget.

Why not just raise membership and admissions?

Although increases are inevitable, the Arboretum strives to balance the need for revenue generation with our desire to keep the Arboretum accessible to a wide audience.

Are there other fundraising activities besides the Annual Fund at the Arboretum?

Yes. While members of the community are asked to participate in the Annual Fund, the Arboretum also engages in other fundraising activities. The Arboretum also seeks

capital gifts to meet the specific facilities needs and to increase endowment.

Who supports the Annual Fund?

Last year, hundreds of people, including current members, trustees, volunteers and staff, who all believed in the Arboretum's mission and support its ideas contributed to the Annual Fund.

Do corporations support the Annual Fund?

Typically corporations contribute by matching their employee's gifts. The Arboretum is a 501(c)(3) non-profit organization, which means your gift is tax deductible. You may be able to double or even triple your gift by submitting the appropriate matching gift form (available from your employer) along with your contribution.

How much should I give?

Only you can determine the amount you can give, but please be as generous as possible, and consider joining or renewing your gift at one of the Annual Fund gift levels.

In what ways can I make my gift?

All gifts and pledges need to be fulfilled by June 30. The Arboretum accepts gifts of cash and marketable securities. Gifts of appreciated securities can be particularly advantageous to donors. For details, please inquire.

30 Years of Moonlight & ROSES

We hope you have made plans to attend the gala of the year, *Moonlight & Roses*, on Friday, June 10. It promises to be an evening to celebrate the Arboretum's history and 30 years of *Moonlight & Roses*. The evening will also honor Elizabeth and John Shober for their many years of service and leadership that have helped the Arboretum blossom. Reservations are required and space is very limited. For more information, visit www.morrisarboretumgala.org or contact Miriam Pinsker at (215) 247-5777, ext. 281.



New Penn Tree Program Commemorates Each Graduating Class With its own Tree, Planted on Penn's Campus

SUSAN CRANE, Director of Marketing



Shown here are students joining Penn Staff for the inaugural Penn Tree Planting program.

On Saturday, April 2, Morris Arboretum Director, Paul Meyer and University Vice Presidents Marie Witt and Anne Papageorge joined Penn students on the College Green to dedicate and plant a tree as part of a new program strengthening the link between Penn and the Morris Arboretum. The idea was to create a new Penn tradition where each year a tree is planted and dedicated on the Penn campus in honor of the graduating Senior Class.

The Penn Tree Program is part of a larger effort spearheaded by Wharton alum, Bill Hohns who initiated a program in 2008 to increase awareness of the Morris Arboretum among Penn students with an initial \$15,000 gift to the Arboretum. In a letter printed in the January/February issue of the Pennsylvania *Gazette*, Hohns addressed a contributor's question (posed in a letter by Robert Rosenthal, W'60) if modest contributions from alumni make a difference ("Would \$25,000 Help?"). "While the Editor addressed the question with statistics that support the importance of "modest" contributions, the question goes deeper," states Hohns, "one that more alumni should ponder." Hohns contends that the Arboretum suffered from the lack of a "champion to herald the resource (Morris Arboretum) among Penn students."

Over the past two years, Bill and his wife, Kathie, have become 'champions' of the Arboretum, and continued their support, based on positive results initiated by Arboretum staff who planned new programming and initiatives to involve the Penn community.

As part of this effort, Hohns sponsored the Penn Tree Program and thinks that "the program is simple, both in its concept and execution; without significant staff cost to the University or Arboretum; and, through the placement of distinctive trees over time, can dramatically influence the appearance of the campus while building pride for each graduating class year."

Each year, the Arboretum in consultation with the University Landscape Architect, will provide that year's graduating class with a selection of 3-4 specimen trees, one of which would be selected by that class as their Penn Tree. By engaging Morris Arboretum for the choices, the Senior Class is assured that the urban and other requirements of the Penn campus are carefully considered. This year, the Class of 2011 voted on their class tree through an email voting system. Over the course of two days, 850 seniors voted, and selected the Legacy sugar maple (*Acer saccharum* 'Legacy') as their "Penn Tree."

The second component of the Penn Tree Program is that, in addition to the tree planting on the Penn Campus each year, the Arboretum will either select an existing tree on its grounds, or where the selection of the campus Penn Tree conforms to the Arboretum's environment and curatorial plans, may plant a companion tree on its grounds. The companion tree at the Arboretum will bear signage dedicating the tree to each graduating class.

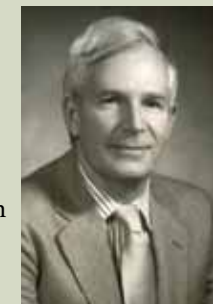
And like the trees that will continue to grow, Bill Hohns ends his letter to the *Gazette* with the following sentiment, "And, like so many things, it all started with a "modest" gift, even a "modest" idea. This makes me believe that "modest" gifts, especially those that bring alumni back to their beloved University and give of their time, collaborating with a staff that cares more than we realize, will continue to make the most difference of all and provide the ideas and seeds Penn so desperately needs to bloom ever more!"

The Lydia Morris Legacy Society Creating Lasting Memories through Endowment



VICTORIA SICKS – Associate Director, Individual & Planned Gifts

A visit with Lee Laden is always a pleasure – time spent with a warm and interesting hostess who has a true love and appreciation for the Morris Arboretum. Her continued interest in many aspects of the Arboretum mission always shines through.



Steve Laden

Photo Courtesy of Lee Laden

When Lee and her late husband Steve moved to Mt. Airy in 1992, their neighbor, Advisory Board Chair Ann Reed, suggested that she get involved at the Morris Arboretum. Lee remembered bringing her children to the Arboretum with their nursery school friends in the 60s, so she took Ann's suggestion and completed the Guide Training Program in 1994. Lee has been a guide at the Morris Arboretum since that time.

Steve Laden's active interest in the Morris Arboretum began when he sponsored an event that strengthened the relationship between the Morris Arboretum and WHY? Steve believed firmly in the need for a strong marketing effort and so he joined the Marketing Committee and worked closely with

Director of Marketing Susan Crane. Their first project was the funding and creation of a Morris Arboretum video. As Susan was developing the content, Steve met with a group of friends and within two weeks had secured the funding!

Lee and Steve became founding members of the Directors' Guild. At every opportunity, they championed the work of Susan Crane and her team, including the identification of marketing initiatives as a central goal of the 2006 Strategic Plan. The Laden's support of *Out on a Limb* – a Tree Adventure exhibit grew out of their recognition of the need to attract new member families to the Morris Arboretum.

Steve Laden died in 2009 and the Arboretum lost a true friend. Lee has created an endowment for Marketing in Steve's memory that will be a lasting sign of his devotion to and belief in the mission of the Arboretum. As Lee says, "When Steve found a person or institution he really admired, he put everything into that relationship." The Arboretum community is deeply grateful to Lee for this extra measure of support that demonstrates a firm commitment to the future of the Morris Arboretum.

Another great way to support *Always Growing*, the campaign for Morris Arboretum!

On December 16, 2010, President Barack Obama signed into law the Tax Relief, Unemployment Insurance Reauthorization and Job Creation Act of 2010 which includes an extension through 2011 of the IRA Charitable Rollover. This legislation allows donors to transfer up to \$100,000 from an Individual Retirement Account (IRA) to a charity tax-free.

At any time during 2011, you should consider an IRA Charitable Roll-over as an effective way to support the mission of the Morris Arboretum if:

You do not need the IRA distribution that you are required to take, OR

You do not itemize deductions but make charitable gifts, OR

Your charitable gifts already equal 50% of your adjusted gross income.

To qualify, you must be at least 70½ and have assets in an IRA. Transfers must be made by your plan provider directly to the Morris Arboretum of the University of Pennsylvania. To learn more about the IRA Charitable Rollover, please contact Victoria Sicks, Associate Director of Development at (215) 247-5777, ext. 152 or via email at vsicks@upenn.edu.

When a similar provision was in force in the period 2006 to 2009, a number of Morris Arboretum friends utilized the IRA Charitable Roll-over to support a garden restoration project like the Long Fountain or a specific endowment that was of importance to them. Similar opportunities for meaningful partnership exist today. This new provision can indeed help you make a difference!



Photo: Tracy Beerley

Spider Mites of Garden Conifers

TRACY BEERLEY – *The John J. Willaman & Martha Haas Valentine Plant Protection Intern*

Flecked and stippled appearances on needles are common symptoms of mite damage.

As summer color unfolds, our garden conifers provide us with beautiful contrasts and textures. Through the gray of winter, conifers continue to provide us with color and contribute greatly to the picturesque landscape of a winter wonderland. Unfortunately, unannounced and unwanted pests are lurking, waiting for spring, when they may cause unsightly damage and possibly death to your favorite garden conifer. Spider mites are common garden pests. They are also very tiny and often go undetected until damage is severe.

What are spider mites? These pests are in the eight-legged arachnid class with spiders and daddy-longlegs. Spider mites have flexible, needle-like mouth parts that they use to pierce the surface of plant tissue so they can feed on the released fluids. This piercing behavior destroys the plants' chlorophyll-bearing cells, creating a flecked or stippled appearance. Symptoms appear first on the needle base, close to the trunk. Like most spiders, the mites exude silk to aid in their dispersal to neighboring trees. The webbing also traps dirt and debris, further exacerbating the appearance of the trees. In dry, warm weather and favorable growing conditions, spider mites increase their rates of feeding and reproduction. If mite populations are dense, conifer needles will eventually turn brown and fall off prematurely, leading to the decline and eventual death of the tree.

The spruce spider mite, *Oligonychus ununguis*, is the most serious pest of landscape conifers in our region. It is mostly a problem in the spring and fall, becoming apparent in dry, warm weather. Symptoms generally progress from the lower branches upward, and fine webbing may be seen on affected branches. The mite has many conifer hosts including: spruce, arborvitae, juniper, hemlock, pine, fir, douglas-fir,

larch and others. The adult mite is oval and about ½ mm long, and its color varies depending on the time of year and current life stage. The two-spotted spider mite or red spider, *Tetranychus urticae*, is a pest of conifers as well as herbaceous plants and deciduous trees. The adult mite is ½ mm long, its color and the two dark spots on its back vary depending on time since the last molt.

Scouting for pests and disease before they cause damage is essential in successful gardening. To care for your conifers you should inspect trees for mite damage throughout the year, especially during egg hatch in spring and fall. A simple method to check for adult mite activity is to shake a branch over a white piece of paper. Mites will appear as small, moving dark specks on the paper. A hand lens is also helpful for identification. If a few mites are observed there is no need to panic, natural insect and mite predators should help to keep the population at manageable levels.

If you happen upon dozens of mites, you may want to consider initiating an appropriate control before serious damage occurs. Verified methods include spraying the affected plant with water at high pressure or applying a horticultural soap. Use of water or horticultural soap allows you to reduce mite population without harming beneficial insects that are important allies.

Conifer-feeding mites commonly become serious landscape pests on planted conifers that have received chemical pesticide applications. Pesticides are non-specific, resulting in the death of targeted and non targeted insects – an unwanted result we need to avoid. With attentive garden eyes and cautious management you will be able to identify and control mite populations properly.

Membership News

We would like to thank the following businesses and non-profit organizations for their membership support. To learn more about Corporate and Non-Profit Membership, please contact Alison Thornton at (215) 247-5777, ext.105 or via email at alisonth@upenn.edu.

CORPORATE MEMBERS

Rose Garden (\$2,500)
The Simkiss Companies

Azalea Meadow (\$1,000)
Land Concepts

English Park (\$500)
Bowman Properties, Ltd.
Linda Corson Landscape Architecture
Marano Gardens LLC

Magnolia Slope (\$250)
Andropogon Associates
Arett Sales Corporation
Organic Gardening
Raymond J. Tatlow Company

NON-PROFIT MEMBERS

Cottage Garden (\$500)
The Hill at Whitemarsh

Herb Garden (\$250)
American Society of Landscape Architects
Garden Club of Philadelphia

Meadow Garden (\$150)
Norristown Garden Club
Sisters of St. Joseph – Assumption Hall

Hardy Fern Garden (\$100)

Exclusively designed for libraries and healthcare organizations.
Friends of East Cheltenham Free Library
Friends of Elkins Park Free Library
Friends of Huntingdon Valley Free Library
Friends of the Glenside Library
Horsham Township Library
Jenkintown Library
Narberth Community Library
Free Library of Springfield Township
Friends of the Upper Dublin Public Library
Upper Moreland Free Public Library
Friends of William Jeanes Memorial Library
Wissahickon Charter School Library
Wissahickon Valley Public Library – Main Library
Wissahickon Valley Public Library – Ambler Branch



Summer at The Shop

Summer is here and it's not too late to start planning and planting a garden. It's also the best time to teach your kids the joys of gardening. In fact, research has found that children are more than twice as likely to eat fruits and vegetables when they are grown in their own backyard! Find everything you need for your family's garden at The Shop. You'll find kid-sized tools, gloves and gardening books. There is also an array of seed kits to help you plant a bird garden, a butterfly garden or even a storybook garden with Princess and the Pea "peas" and Jack in the Beanstalk's "beans." Stop by soon and start planning for your best garden yet!



Photo: Zac Brooks

The Compton Café – Your New Garden Café Destination

Members and their guests are enjoying the new Compton Café at the Morris Arboretum. Chef Josh Hunter brings fine dining and sustainable American cuisine to the Compton Café from his Zagat-rated Terrace Street Bistro in Manayunk.



Photo: Bob Gutowski

Compton was the name John and Lydia Morris gave to their home and garden, which today you know as the Morris Arboretum. Start your weekend at the Compton Café with new weekend hours from 10am-2:30pm. Weekday hours are 11am-2:30pm. Choose from our new menu of fresh, local gourmet food. New this year, our picnic dinners are available for pre-order on concert nights (July 28, August 4 & 11). To order, call Andrea at (610) 247-8575 one day in advance. Visit soon and let us know how you fared.



Photos: Ruth Pfeffer

Costa Rica

RUTH PFEFFER, *Expert Birder*

In February 2011, the Arboretum led an 11-day birding trip to Costa Rica. I was joined by Morris Arboretum Education Coordinator Jan McFarlan and fellow Expert Birder Rudy Zamora, on a trip to discover the diverse bird habitats of Costa Rica – a country with more species of birds than the United States and Canada combined. Some of the most memorable stops included the Lankester Botanical Gardens with its world class collection of nearly 1,000 orchids, the Los Esquinas Rainforest Lodge Gardens located deep in the Costa Rican rainforest, and the Wilson Botanical Garden home to an amazing collection of colorful bromeliads. Whether the group was enjoying a river boat ride through the mangroves, taking in the view at Rancho Naturalista, or visiting the gardens of Savegre Lodge, there was always an abundance of avian friends to be seen. Of the almost 900 hundred species of birds found in Costa Rica, 200 are migrants from North America, and many of them migrate through or nest in the wetlands, meadows, and wooded areas found at the Arboretum. It was a great experience to see some of these species in Costa Rica knowing that they would return to the Arboretum's beautiful gardens in the spring. To learn more about this trip check out <http://morrisarboretum.blogspot.com/2011/05/costa-rica-birding.html>.



New Zealand

Twenty members of the Morris Arboretum joined Paul Meyer and his wife Debbie Rodgers on a three week tour of New Zealand last January. Expertly led by Richard Lyon, a Landscape Architect who was born and raised in New Zealand but now lives with his family in Kennett Square, the group experienced wonderful hospitality in private gardens as well as the scenic natural wonders of New Zealand. Plans are being made for a Morris Arboretum return visit to New Zealand in 2013.

Top: Dramatic drifts of *Agapanthus* were in full bloom at Hortensia, the garden of Hugette Michel.

Center: Woodbridge, the garden of Christine and Tony Peek who are posing with the group.

Bottom: The stunning glacier carved landscapes of Doubtful Sound were a favorite of the group.



Photos: Paul Meyer and Debbie Rodgers

A “GREEN” GREEN LAWN – Sustainable Lawns for a Better Future

KIM FRISBIE – *Freelance Writer*

Ok, now that spring has sprung, many of us are thinking about getting our lawns back into top notch, pristine condition. Call the lawn care service, load up on bags of fertilizer and herbicides, get the mower in running order..... WHOA!! Let's stop a second and reconsider. First of all, the majority of fertilizer and herbicide runoff that is polluting our public water supplies comes from home gardeners, not large scale farming operations. Second, a certain amount of “weeds” are not necessarily a bad thing. For example, every lawn should have some percentage of clover – the nitrogen fixing bacteria they produce is essential for the well-being of the entire lawn. Clover is highly drought-resistant, and its tiny white flowers provide nectar for bees, which they in turn make into clover honey.

The smartest thing you can do for your family, the environment, and your lawn is to rework your lawn care program into a simpler regimen. There are several basic steps you can follow to ensure a sustainable, “green” lawn, without incorporating any toxic pollutants. First of all, water your lawn less frequently, but at a greater depth. This will encourage grass roots to search deeper into the soil for water, making them stronger and less likely to dry out during dry periods. Weed roots tend to be shallow. Lightly watering your lawn every other day simply encourages your grass roots to stay near the surface and compete with the weeds. If the top few inches of soil are bone dry, the weed seedlings up there will die while the more deeply rooted grass will still find moisture further down. Don't water on a schedule – that won't help in the war on weeds. Watch your grass – it will start to curl before it turns brown – that's the best time to water.

The next step is to aerate your lawn. Soil compaction is often confused with improper watering or lack of fertilizer, but it is caused when the top four inches of soil become compressed, impeding the movement of air, water, and nutrients to the grass roots. This can lead to insect, pathogen, and nematode damage. The grass plants are stressed, they are

less able to compete with weeds and slow to recuperate from injury. Aerating your lawn in the spring and fall will reduce compaction, promote root development, and enable better absorption of nutrients and water, thereby diminishing runoff into neighboring streams.

It is also important to test your soil before getting started to determine the pH. Your local extension office will probably do it for free. Your lawn is only going to be as good as the soil in which it grows, so knowing if it is acidic or alkaline will enable you to add the proper soil amendments to correct imbalances, deficiencies or toxicities (acidic soils need lime, alkaline soils need sulphur, etc.). As an example, dandelions love a pH of about 7.5, while grass loves a pH of 6.5. So if your pH is 7.5 or higher, you're giving the home field advantage to the dandelions, and your grass won't really have a chance!

Next, when mowing, keep your lawn a little on the high side. Never take off more than 1/3 of the grass blade. A longer grass blade helps convert sunshine into sugar which helps feed the lawn and encourages a stronger root system and thicker turf. Longer grass also shades out the weeds, put helps cool the roots of your grass, meaning less watering! Also, don't rake up your clippings – grass clippings act as valuable mulch, adding nutrients to the soil while preventing water evaporation on really hot days.

Finally, we have to take a hard look at the chemicals in lawn care products – these are toxic to birds and beneficial insects, not to mention children and pets. Exposure to lawn and garden pesticides has been linked to leukemia, cancer, kidney damage, genetic defects, asthma, and developmental and behavioral disorders. With this information in mind, we should all learn to tolerate a few weeds in our lawns. Managing and lessening our irrigation helps avoid unnecessary runoff into our streams and rivers, and ultimately our drinking water. As environmental stewards, we must take responsibility for our individual actions as they affect others – and understand that doing the least harm to the environment or other individuals is always the best policy.



Photo: Paul Meyer

Classes, Lectures and Seminars

Save the Dates for Connections Beyond Our Garden – Talks on People, Plants and Place

Wednesday afternoons at 2pm – October 12th, November 9th and December 7th. Our mid-week afternoon series continues this fall with three speakers you won't want to miss including writer, naturalist, and historian Robert McCracken Peck, *Curator of Art and Artifacts and Senior Fellow* of the Academy of Natural Sciences. A reception with refreshments will follow each presentation and tours of the Arboretum are available afterward. Reservations and payment are required in advance as space is limited. *Members: \$18 Non-members \$20.* Call (215) 247-5777, ext. 125 or email education@morrisarboretum.org.

Fall Classes return in September!

Each fall, the Morris Arboretum offers a wide selection of classes for both children and adults on topics ranging from horticulture and art, to inspiring trips to nearby gardens and natural areas. Look for your Fall Course Brochure to arrive in early August and check our website for more information www.morrisarboretum.org.

Invasive Plant Conference 2011 – Tools and Technology for Mapping, Managing and Mending Invaded Lands August 3 and 4, 2011 at the US Fish and Wildlife Service, National Conservation Training Center in Shepherdstown, West Virginia.

Managing non-native invasive species to mitigate the threat to the world's biological diversity is getting more challenging. Our quality of life depends on the health of our natural resources, but limited funding, human development, introduction of new species and complicated species interactions combine to make the job tough. In this eighth Mid-Atlantic conference, sponsored by the Morris Arboretum, the Mid-Atlantic Invasive Plant Council, and other government agencies, attendees will not only obtain useful background information on the issues surrounding this biological problem but will also learn about mapping and monitoring strategies, techniques for preventing the introduction and spread of invasive plants, and which herbicides are recommended for use in natural areas. For more information call (215) 247-5777, ext. 156 or email jl@upenn.edu.

Summer Concerts Series – Groovin' in the Garden and XPN Kids Corner

Join us this summer for more music in the garden! Pack a picnic and a blanket or chair and relax in the beauty of the Arboretum's Azalea Meadow while enjoying some great musical entertainment.

Groovin' in the Garden with Plan B Jazz Band – Thursday, July 28, 7pm

"Innovative" is the word that best describes *Plan B* – a contemporary smooth jazz band made up of five talented musicians who were born and raised in Philadelphia. *Plan B* incorporates new dynamics and energetic expressions into their songs – whether they are performing a popular cover tune, or some of their highly requested originals. Free beer tastings sponsored by Flourtown Beverage from 6-7pm. Concert begins at 7pm. Blankets or chairs are recommended.

XPN Kids Corner Presents Alex and the Kaleidoscope Band – Thursday, August 4, 6:30pm

With 14 national awards for excellence in children's entertainment, *Alex & the Kaleidoscope Band* uplift and engage audiences of all ages with their lively, interactive, and world-music infused performances.



XPN Kids Corner Presents Yosi @ The Superdads – Thursday, August 11, 6:30pm

Yosi @ The Superdads ROCK kids & their families! Join the "Rockin' Band" in this lively & humorous concerts featuring songs from Yosi's multi-award-winning CD's, & latest CD, Super Kids Rock! Wiggle like a worm in a "Hole in The Ground." Act like a ferocious "Dinosaur in Love." Enjoy a bowlful of "Chicken Noodle Soup." Get on a chugging "Train Medley" & make "Friend's Around The World!" Yosi's music can be heard daily



on Sirius/XM Satellite Radio.
www.YosiMusic.com

SUMMER CONCERT INFORMATION

Please note, on summer concert evenings, ALL CARS ENTERING AFTER 4 PM will be charged a per-car parking fee instead of a per-person admission in order to encourage carpooling and accommodate more visitors with the Arboretum's limited parking.

Beech, Chestnut, Holly, Oak, Laurel, and Katsura members are offered free parking for concerts as a benefit of membership. A valid membership (Beech and above) card and photo ID must be shown at kiosk to park for free.

Individual, Dual, Family, and Far-Away Friend members and Penn Card Holders – Present a valid membership or Penn card at the entrance kiosk to receive a discounted parking rate of \$10 per carload. *Please note: If you purchase a membership the night of the concert, and have already paid the non-member admission fee, you will be reimbursed in full. Simply present your receipt when you sign up for membership. This is applicable only on concert nights.*

General Concert Parking Fee Information

A single member in a car qualifies it as a member car and will qualify it for the \$10 fee. Per person admission fees will not be collected from non-members in the vehicle. Cars with no members will be charged a \$30 parking fee in lieu of per person admission fees.

Walk/Bike/SEPTA Fees

Non-member fees for concert nights: \$5 per individual, 3 years of age and up. (after 4 pm) No other coupons or discounts apply. Members who walk, bike or take SEPTA will not be charged a fee.

To expedite service at the gate on concert nights:

- There will be a cash and members-only lane. Cash is much faster to process than credit cards.
- Membership cards will be required to receive discounted rates or free entrance.
- Gate attendants will not be able to look up your name if you do not have your membership card on hand for concerts.

Thank you in advance for your cooperation!



Photo: Paul Meyer

summerevents

JUNE

Garden Railway Display

Open daily through September 5

See back cover for more information.

4 Garden Discovery Series

Saturday, June 4, 11am-3 pm

Making Butter – Visit the Arboretum's Springhouse (one of only a few remaining in Philadelphia) and discover how it was used to keep milk and other perishables cool. While you're there, help make butter from cream using only a jar, some marbles and your muscles.

10 Moonlight @ Roses Gala

Friday June 10, 6pm-Midnight

Come celebrate the 30th Anniversary of *Moonlight @ Roses!* Enjoy cocktails in the Rose Garden and dinner and dancing under the stars. This year's honorees are long-time Arboretum friends and contributors, John and Elizabeth Shober. Net proceeds from the event will go toward the Arboretum's Historic Preservation Endowment, to ensure the preservation of our

beautiful gardens and landscape for generations to come. Space is very limited. For tickets or more information visit www.morrisarboretumgala.org.

11 Pennsylvania Train Weekend at the Garden Railway

Saturday and Sunday, June 11 & 12, 10am-4pm

Celebrate Pennsylvania trains at the Arboretum! Learn the history of the Pennsylvania railroads and see trains from lines that have run through Pennsylvania, such as B&O, Lackawanna, and the Pennsylvania Railroad as well as Arboretum and guest trains.

14 Storytime at the Morris Arboretum

Tuesday, June 14, 10:30-11am

Join us as we partner with the William Jeanes Library on this new event. Toddlers and preschoolers are invited to our Children's Outdoor Classroom to listen to fabulous stories as told by a William Jeanes librarian. Take a walk after story time and then have lunch in our café! In case of bad weather we will gather inside.



Photo: Paul Meyer

16 Train Enthusiasts' Night
Thursday, June 16, 5-8pm
 Join us in the Upper Gallery of the Widener Visitor Center to celebrate everything trains!

Watch train club members, artists, and train manufacturers take over the Arboretum. Catch the enthusiasm and come visit these wonderful displays.

30 Annual Beeches, Butterflies and Bugs Summer Evening
Thursday, June 30, 5:30-7:30pm
 Beech (\$115) members and above are invited to an exclusive evening of family fun. Author of *Just About a Year: All About Seasons*, Leslie Ehrin, will be on hand to read her story and teach children about the seasons and months of the year through her detailed illustrations. After Leslie tells her enchanting story, all attendees will receive a treasure map of different plants and trees from her book to find right here at the Morris Arboretum. Storytelling will begin at 6:00. Pack a picnic dinner or dine in the Café. Invitations will be mailed to eligible members. Please register online by visiting www.morrisarboretum.org or by calling (215) 247-5777, ext. 170.

26 Circus Week at the Garden Railway
June 26 - July 4, daily 10am-4pm
 The first circus was held in Philadelphia in 1793. Come see the Big Top and the circus trains, learn the history of the circus and watch for a few surprises. Free with regular admission.

JULY

2 "Tremendous Twos" – Morris Arboretum Celebrates Out On A Limb's 2nd Birthday!
Saturday, July 2, 11am-1pm
 Join us Saturday morning as we celebrate the 2nd anniversary of *Out On a Limb* with kid's crafts and complimentary birthday cake at noon, while supplies last.



Photo: Jaime Perez

Great Trees at Morris Arboretum
Sundays in July at 1pm
 Meet in front of the Widener Visitor Center and take a guided tour of the Great Trees at the Morris Arboretum.

12 Storytime at the Morris Arboretum
Tuesday, July 12, 10:30-11am
 Join us as we partner with the William Jeanes Library on this new event. Toddlers and preschoolers are invited to our Children's Outdoor Classroom to listen to fabulous stories as told by a William Jeanes librarian. Take a walk after story time and then have lunch in our café! In case of bad weather we will gather inside.

14 Member's Only Bring a Friend for Free Night
Thursday, July 14, 5-8pm
 Members of all levels are invited to pack a picnic dinner or dine at the café. This is a great opportunity to introduce a friend, family or neighbor to the Morris Arboretum for free on one special evening. Members are welcome to bring more than one guest, but are asked to accompany their guests to the Arboretum. Registration is NOT required.

16 Thomas the Tank Engine & Friends Weekend at the Garden Railway
Saturday and Sunday, July 16 & 17
 Come visit the Garden Railway and see Thomas & Friends take over the tracks.

28 Summer Concert Series – Plan B Jazz Band
Thursday, July 28, 7pm
 Bring a picnic dinner and sit back and relax to the sounds of jazz in the summer garden. Free beer tastings, sponsored by Flourtown Beverage, from 6-7pm. Concert begins at 7pm. Blankets or chairs are recommended. For more information see p. 15.

AUGUST

4 XPN Kids Corner Concert – Alex and the Kaleidoscope Band
Thursday, August 4, 6:30pm
 Grab the kids and pack a picnic for an evening of fun and entertainment in the garden. Blankets or chairs are recommended. For more information see p. 15.

6 Garden Discovery Series
Saturday, August 6, 11am-3pm
Made in the Shade – Find out why planting trees is a cool thing to do. How much can a tree's canopy lower the temperature?

9 Storytime at the Morris Arboretum
Tuesday, August 9, 10:30-11am
 Join us as we partner with the William Jeanes Library on this new event. Toddlers and preschoolers are invited to our Children's Outdoor Classroom to listen to fabulous stories as told by a William Jeanes librarian. Take a walk after story time and then have lunch in our café! In case of bad weather we will gather inside.

11 XPN Kids Corner Concert – Yosi and the Superdads
Thursday, August 11, 6:30pm
 Grab the kids and pack a picnic for an evening of fun and entertainment in the

garden. Blankets or chairs are recommended. For more information see p. 15.

28 Circus Week Encore at the Garden Railway
August 28 - September 5
 The first circus was held in Philadelphia in 1793. Come see the Big Top and the circus trains, learn the history of the circus and watch for a few surprises.

SEPTEMBER

4 The Give and Take Jugglers
Sunday, September 4, 1-2pm
 To celebrate Circus Week and end the Garden Railway season in "high style," the Arboretum is proud to present The Give and Take Jugglers with Erica the Aerialist. Jugglers Dave and Nick perform a family friendly show incorporating comedy and audience involvement. Erica will perform aerial acrobatics on free-standing rigging.

11 Grandparents Day
Sunday, September 11
 BYOG (bring your own grandparent) to Morris Arboretum on National Grandparents Day. Kids who bring a grandparent get \$2 off admission, making Youth admission \$5.



Photo: Dave Cavanaugh

Don't miss these Fall events coming in October!

1 The Scarecrow Walk returns
October 1 through October 16!
 Thirty original designer scarecrows from the silly to the spooky, will be displayed within the beauty of the Arboretum's fall garden.

2 Fall Festival
Sunday, October 2, 11am-3pm
 Don't miss this afternoon of autumn fun that has become an annual tradition for many families. Make your own scarecrow, paint a pumpkin, sample different varieties of apples. Some activities have an additional fee.



Photo: Jaime Perez

ADMISSION			
Adults (18 - 64yrs.)	\$16	Children (3 - 17yrs.)	\$7
Senior (65+yrs.)	\$14	Members	FREE

* Please note, Arboretum events are subject to change without notice.

In the event of inclement weather, please check the website at www.morrisarboretum.org for information or call (215) 247-5777, ext. 0.